

Product Specification

Design: 'Crossover'

Design

Crossover is a slim line desking system. It has a simple yet aesthetically pleasing set of intelligent core components that give maximum performance for minimal product life cost.

Features

At the heart of Crossover is a pair of horizontal beams which provide a robust structure and a continuous fixing method for all furniture elements. Legs, screens, wire management, worksurfaces and accessories can be attached at any point along the beams regardless of the desk module, therefore saving a multitude of components.

The system of attaching the beam anywhere provides the flexibility to position key furniture elements to suit specific functional and ergonomic requirements rather than in predetermined, regular intervals.

Additionally, by attaching all structural elements to the beams the workstation structure can be built with worksurfaces removed; providing easy access when laying power and data cables

Applications

The flexibility designed into the structure allows Crossover to provide a comprehensive range of different applications. It can be specified as a simple rectangular desk or configured into multi-linked workstation clusters from 90° to 120° single piece desks. Through rectilinear planning bench style desking to wave and double wave can also be constructed. Crossover can accommodate a multitude of different layouts from a common set of components and without compromise.

Environment

Crossover has been developed with the intent to cause the minimum impact on the environment. The product has been designed for the maximum working life and whenever possible reclaimable materials are used. Crossover is up to 100% recyclable at the end of its useful life and is made from up to 55% recyclable material.

Finishes

Crossover can be finished in an array of MFC's and veneers – see the full list below, with corresponding codes and complementary metalwork finish.

Code Title

AT	Autumn MFC
EO	English Oak MFC
MP	Maple MFC
BH	Beech MFC
WH	White MFC
HD	Highland Oak MFC
RO	Reformed Oak
RN	Reformed Natural Cherry
RP	Reformed Maple
RW	Reformed Walnut
RB	Reformed Beech

Top/Fronts

Autumn MFC
English Oak MFC
Maple MFC
Beech MFC
White MFC
Highland Oak MFC
Reformed Veneer – Light Oak
Reformed Veneer – Natural Cherry
Reformed Veneer – Maple
Reformed Veneer – Walnut
Reformed Veneer – Beech

Metalwork

Silver RAL 9006, Dusk RAL 7022, White RAL 9010
Silver RAL 9006, Dusk RAL 7022, White RAL 9010
Silver RAL 9006, Dusk RAL 7022, White RAL 9010
Silver RAL 9006, Dusk RAL 7022, White RAL 9010
Silver RAL 9006, Dusk RAL 7022, White RAL 9010
Silver RAL 9006, Dusk RAL 7022, White RAL 9010
Silver RAL 9006, Dusk RAL 7022, White RAL 9010
Silver RAL 9006, Dusk RAL 7022, White RAL 9010
Silver RAL 9006, Dusk RAL 7022, White RAL 9010
Silver RAL 9006, Dusk RAL 7022, White RAL 9010
Silver RAL 9006, Dusk RAL 7022, White RAL 9010
Silver RAL 9006, Dusk RAL 7022, White RAL 9010
Silver RAL 9006, Dusk RAL 7022, White RAL 9010
Silver RAL 9006, Dusk RAL 7022, White RAL 9010

Fabrics

Class A:	Interface – Cara
Class B:	Interface – Lucia, Astra, Screen
Class C:	Interface – Streetwise, Metallation
Class D:	Fabric details on application

Glazed Screen Colours

OB	Opaque Blue
OC	Opaque Crystal
OG	Opaque Green
OW	Opaque White

Beam

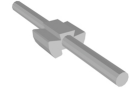
- Rolled steel, twin beam system, designed specifically for Crossover
- Provides rigidity and structure to the system
- Allows for fixing of all furniture elements at any point of the beam



Desk End Beam Set
1600 Beam



120° Beam



Beam Connector

Legs

- Aluminium extruded legs designed specifically for Crossover
- Standard 730mm high desk
- Integral height adjustment/levelling mechanism – 40mm upwards adjustment
- Integral top castings provides for fixing to leg beam
- Unhanded even at point of installation
- Available as single, double, reduced width, mid bench or wave



90° Leg



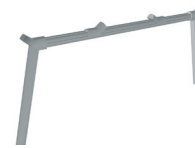
120° Leg



1600 Mid Leg



600mm End Leg
800mm End Leg
800mm Wave End Leg
1000mm Wave End Leg



1600 Leg

Screens

- Lightweight aluminium framed fabric/glazed construction
- Double skin panel construction
- Multi-application, can be used bench, desk or wave desk system
- Can be used full or partial width and off module
- Fabric & glazed



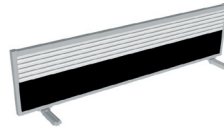
Fabric Screen



Glazed Screen

Tool Rail Screens

- Integral aluminium extruded tool rail
- Double skin panel construction
- Fabric and glazed option
- Single glazed option
- Accepts Intrigue accessories
- Multi-application, can be used bench, desk or wave desk system
- Can be used full or partial width and off module
- Fabric & glazed



Tool Rail Fabric Screen

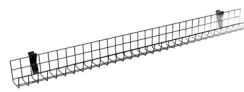


Tool Rail Glazed Screen

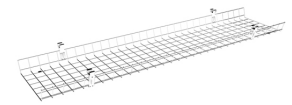
Add on Cable Management

HORIZONTAL

- High capacity cable basket
- Single or double width options (dependant on application)
- Optional cable segregator pack (5 per pack)
- Attached through clip mechanism to desk beam



Cable Basket



Double Cable Basket

VERTICAL

- Clip on 2 way vertical cable spine
- Multi positional along horizontal cable manager



Floor to Beam
Cable Spine

Electrical Accessories



4 gang Power Socket



Double Socket (no clips)



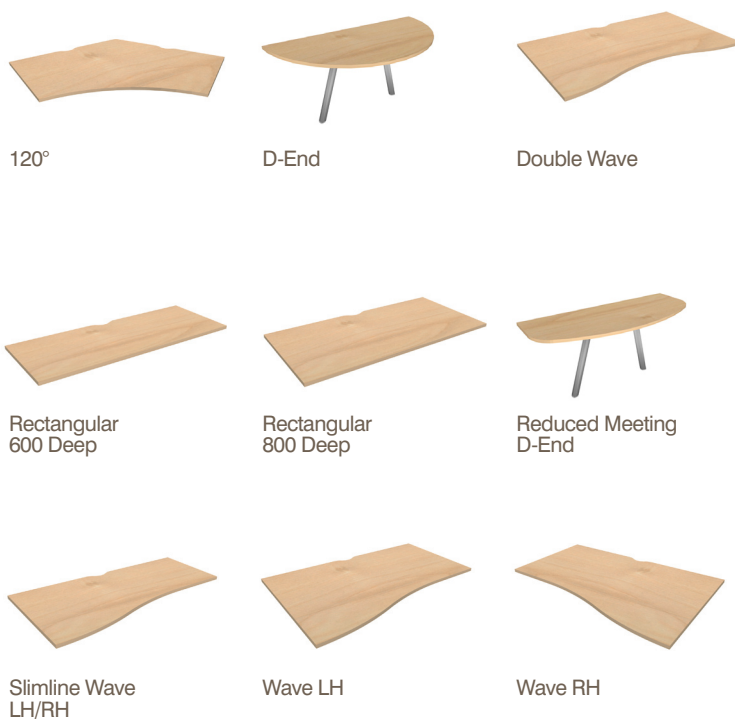
Interconnecting Leads



Power Lead

Worksurfaces

- Finishes – MFC (2mm edging) & veneered MDF (profiled front edge)
- 25mm thick
- Square corners all round
- Scalloped cable access included



Pedestals

Standard Universal Storage

Accessories

Assorted accessory trays can be hung from top edge of screens or accessory rail



British Standards

Crossover is certified to the following standards

BS4875	Part 5, 2001	Strength and stability of office furniture
BSEN527	Part 1, 2000	Office furniture desk and table dimensions
BSEN527	Part 2, 2002	Office furniture desk and table mechanical safety requirements
BSEN527	Part 3, 2003	Office furniture desk and table methods to test for the determination of strength and stability
BS6396	2002	Electrical systems in office furniture and screens
BSEN9241	Part 5, 1999	Ergonomics of design and use of visual display terminals (VDT's) in offices
BS5459	Part 1, 1977	Specification for performance requirements and tests for office furniture, desks and tables